

Freedom of Information Publication Scheme

Who we are and what we do

About us

Midlands Partnership NHS Foundation Trust was formed on 1 June 2018 following a merger between South Staffordshire and Shropshire Healthcare NHS Foundation Trust and Staffordshire and Stoke on Trent Partnership NHS Trust.

Midlands Partnership NHS Foundation Trust provides physical and mental health, learning disability and adult social care services across Staffordshire, Stoke-on-Trent and Shropshire. We provide a vast range of community services for adults and children and specialised services such as rheumatology and rehabilitation, which are delivered in venues ranging from health centres, GP practices, community hospitals and people's own homes.

The Trust also provides services on a wider regional or national basis including perinatal, eating disorder and forensic services. We deliver out of area sexual health services and our Inclusions service offers psychological and drug and alcohol services, in the community and in prisons, and has contracts across the country. We also provide genitourinary medicine services.

As an organisation we serve a population of 1.5 million, over a core geography of 2,400 square miles, and employ around 8,500 members of staff.

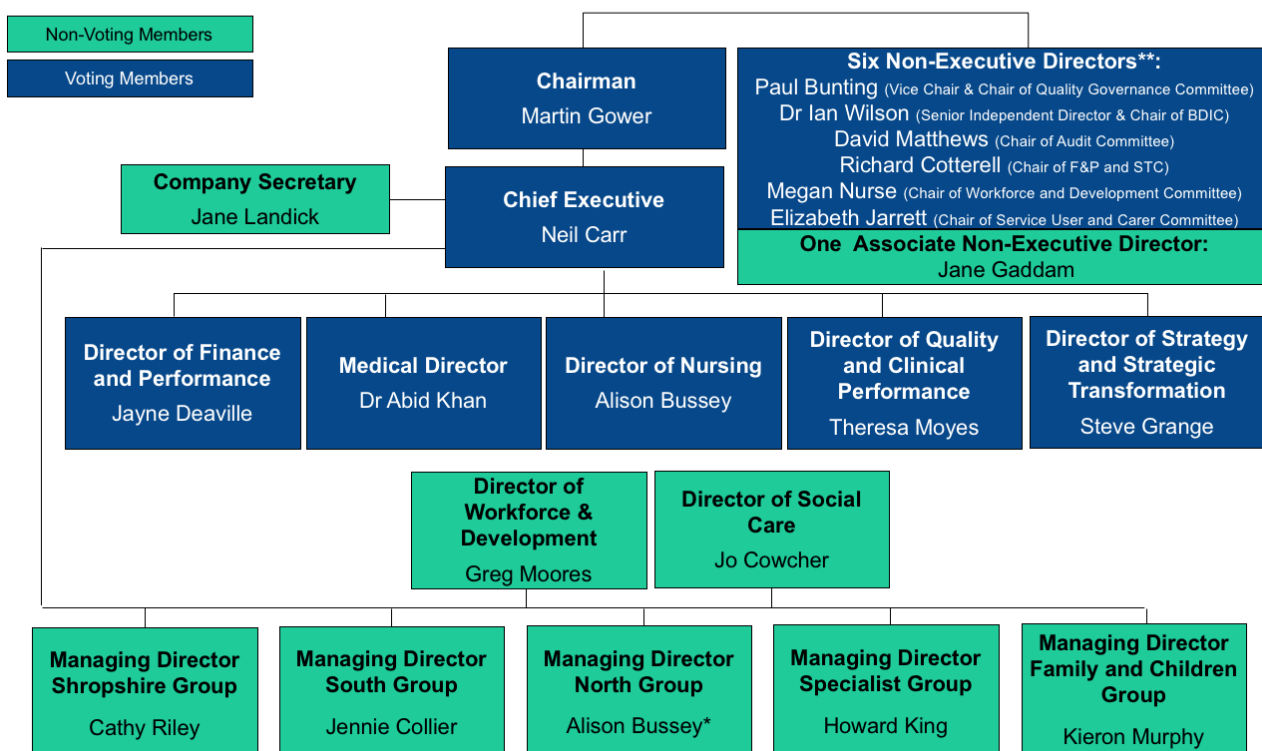
We have close links with local universities including Keele and Staffordshire.

How we fit into the NHS

To find out more about the structure of the NHS please visit the [NHS Choices information on NHS Structure](#)

Organisation Structure

MPFT Trust Board



* Interim Arrangement

** Provisional committee chair arrangements, currently being reviewed by the Chairman with a view to changes.

Who we work with

We work with key partners within the NHS including our local Clinical Commissioning Groups (CCGs); the regulators of health and social care including NHS Improvement and the Care Quality Commission; other local Trusts including other providers of mental health, learning disability and specialist services as well as local acute hospital care providers.

We also work closely with independent practitioners such as GPs and Dentists and local authorities, including social services, police, probation, prison service, voluntary and charitable bodies, pharmaceutical services and some private sector providers.

We also have close links with academic institutions, particularly Staffordshire University, Keele University, Aston University, and local colleges.

We lead an innovative network of NHS Foundation Trusts which has been awarded a contract by the Ministry of Defence to provide acute in-patient care to serving forces personnel.

As an NHS Foundation Trust we have 12 Partner Governors who are appointed by partner organisations to serve on our Council of Governors. These partner organisations are;

- [Shropshire Council](#)
- [Shropshire and Telford & Wrekin Voluntary Sector Mental Health Forum](#)
- [Telford & Wrekin Council](#)
- [Staffordshire County Council](#)
- [Stoke on Trent City Council](#)
- [VAST \(Staffordshire\)](#)

We will agree with our partners the information which we will provide about them before disclosing it.

Key Personnel

Follow this link for details of [Key Personnel](#)

Location and Contact Details

Trust Headquarters
St. George's Hospital
Corporation Street
Stafford ST16 3SR

Tel. 0300 790 7000 or [Email us](#)

What we spend and how we spend it

Details of what we spend and how we spend it are reported in a number of ways.

As Midlands Partnership NHS Foundation Trust only came into existence on 1 June 2018, much of the financial information will be found on the websites of our legacy organisations,

South Staffordshire and Shropshire Healthcare NHS Foundation Trust and Staffordshire and Stoke on Trent Partnership Trust.

Annual Statement of Accounts – part of the Annual Report

[SSSFT Annual Report](#) [SSOTP Annual Report](#)

Budget information is reported to the Trust Board each month in the publically available papers for Board meetings

[SSSFT Board Meetings](#) [SSOTP Board Meetings](#) [MPFT Board Meetings](#)

Financial audit reports information is contained in the Management Letter which is part of the Annual Report and Accounts

[SSSFT Annual Report](#) [SSOTP Annual Report](#)

Financial Governance is covered in the [Standing Financial Instructions](#)

Capital programme

pending

Staff and Board members' allowances and expenses

These are details of the allowances and expenses that can be incurred or claimed, including the total of the allowances and expenses paid to individual senior staff and management board members by reference to categories. These categories are produced in line with the department's policies, practices and procedures under headings like travel, subsistence and accommodation.

Our staff allowances and expenses are in line with national Agenda for Change agreements. Board members' allowances and expenses are reported in the Council of Governors' papers

[SSSFT Council of Governors](#) [MPFT Council of Governors](#)

Staff pay and grading structures

Staff pay and grading structures are in line with national Agenda for Change agreements. Details can be obtained from NHS Employers relating to the Agenda for Change terms and conditions.

Funding (including endowment funds)

This information is available in the Annual Report and Accounts

[SSSFT Annual Report](#) [SSOTP Annual Report](#)

Procurement and tendering procedures

Details of procedures used for the acquisition of goods and services are included with the Trust's [Standing Financial Instructions](#)

Details of contracts

Information about contracts can be obtained from the Company Secretary, email jane.landick@mpft.nhs.uk

What are our priorities and how are we doing?

Details of our priorities and how we are doing can be found in a number of ways.

As Midlands Partnership NHS Foundation Trust only came into existence on 1 June 2018, much of this information will be found on the websites of our legacy organisations, South Staffordshire and Shropshire Healthcare NHS Foundation Trust and Staffordshire and Stoke on Trent Partnership Trust.

Please click on the links below to access the information

Our Annual Report and Accounts

[SSSFT Annual Report](#) [SSOTP Annual Report](#)

[SSSFT Strategic Plan](#) [SSOTP Vision, Values and Goals](#)

Targets, aims and objectives

Regular reports on performance against targets, aims and objectives is provided to the Trust Board and is included in Board minutes and papers reported to Board Meetings

[SSSFT Board Meetings](#) [SSOTP Board Meetings](#) [MPFT Board Meetings](#)

Quality Accounts

[SSSFT Quality Accounts](#) [SSOTP Quality Accounts](#)

More information about the quality of Trust services is available on the [Care Quality Commission website](#)

How we make decisions

Information about our decision making processes is available. Please click on the links below to access the information:

Board Meeting agenda, supporting papers and minutes

[SSSFT Board Meetings](#) [SSOTP Board Meetings](#) [MPFT Board Meetings](#)

We value the input of those who use our services

[service users and carers - getting involved](#)

Public consultations

There are currently no ongoing public consultations, but any that are undertaken would be publicised and reported on the website.

Our Policies and Procedures

We will continue to operate the policies of our legacy organisations whilst working to merge and update them for Midlands Partnership NHS Foundation Trust. For further information please contact the Company Secretary – [email](#)

Risks and Registers

Declarations of Interests and other statutory documents can be found mpft.nhs.uk/index.php/about-us/statutory-declarations

Services we offer

North

Adult Physical Health

Home First (S75)
Assessment Case Management
Tissue Viability
Occupational Therapy
Physiotherapy
Speech and Language Therapies
Asylum Team
Podiatry
Specialist Falls
Community Nursing
Cancer and Support Therapies
Palliative Care
Continence
Chronic Pain Management
Long Term Conditions - Heart, Respiratory and Diabetes

Haywood Hospital/Leek Moorlands Hospital

Inpatients
Outpatients
Rheumatology
Minor Injuries Unit - Leek
Walk-in Centre - Haywood

South

Adult Mental Health

Inpatients - Acute, Older Adult, MOD beds and Psychiatric Intensive Care Unit (PICU)
Improving Access to Psychological Therapies (IAPT) including North Staffordshire
Admin Hubs
Dementia Memory Service
Dudley Dementia Team
Dementia Liaison Team
Mental Health Pathway Teams
Crisis
Section 75
Liaison Psychiatry
Libraries

Adult Physical Health

Intermediate Care
Assessment Case Management (S75)
Tissue Viability
Occupational Therapy
Physiotherapy
Speech and Language Therapies
Podiatry



Midlands Partnership

NHS Foundation Trust

A Keele University Teaching Trust

Specialist Falls
Community Nursing
Community Rehabilitation
Palliative Care
Continence
Chronic Pain Management
Long Term Conditions - Heart, Respiratory, and Diabetes
Dietetics

Specialist Services

Physical Health Psychology
Neuro Psychology

Shropshire

Adult Mental Health

Inpatients - Acute, Older Adult and Rehab.
IAPT (Telford and Shropshire)
Admin Hubs
Dementia Memory Service
Mental Health Pathway Teams
Crisis
Criminal Justice
RAID

Family and Children

Children's Services—Staffordshire

Looked After Children

CAMHS

Community Nursing

Paediatrics

Paediatric Learning Disabilities

Individual packages of care

Complex Care Team

0-19

North Staffordshire and Stoke

Physiotherapy

Speech and Language Therapies

Occupational Therapy

Community Nursing

School Nursing

Breastfeeding

Long Term Conditions

Health Visiting

YOS

Specialist Services

Eating Disorders - Inpatients and Community

Mother and Baby - Inpatients and Community

South Staffordshire

Physiotherapy

Speech and Language Therapies

Community Nursing

Podiatry

Health Visiting

Dietetics

Shropshire

0-25

Specialist

Sexual Health and HIV Services

Telford
Shropshire
Stafford
Stoke and North Staffordshire
Leicester

Forensics Services

Inpatients - Security Team, Medium Secure Stafford, Low secure Stafford and Shropshire
Reach Out and Community Forensics - Stafford and Shropshire
Personality Disorder Service - Stafford
MBT Treatment - Stafford
PIPE – Stafford

Learning Disabilities

Community
Intensive Support Service
Oak House
Nursing

Community SMS

Thurrock (Inclusion Thurrock Visions)
Buckinghamshire (One Recovery Bucks)
Cambridgeshire (Inclusion Recovery Cambridgeshire)
Hampshire (Inclusion Recovery Hampshire)
Reading (IRiS Reading)
Telford & Wrekin (Telford STaRS)

Adult Mental Health

MOD - Contract Management

Adult Physical Health

Dental
Diabetic Retinopathy
Court Diversion

IAPT

Thurrock (Inclusion Thurrock)
Wirral (Inclusion Matters Wirral)

Inclusion Services

Substance Misuse / Drug and Alcohol - Bucks, Reading, Thurrock and Hampshire

Prison (SMS and/or MHS)

Yorkshire Prisons (Newhall, Askham Grange, Wakefield, Wealstun, Leeds)
Staffs Prisons (Stafford, Werrington, Drake Hall, Dovegate, Swinfen Hall, Featherstone,
Oakwood, Brinsford, Oakwood)



Midlands Partnership

NHS Foundation Trust

A Keele University Teaching Trust

HMP Stoke Heath (Shrops)
Worcestershire Prisons (Hewell, Long Lartin)
Bucks Prisons (Aylesbury, Grendon and Springhill)
Oxfordshire Prisons (Bullingdon, Huntercombe, IRC Campsfield House)
HMP Isle of Wight
HMP Birmingham
HMP Stocken
Derbyshire Prisons (Sudbury, Foston Hall)

To find out more about the services we provide, please visit the websites of our legacy organisations.

[SSSFT website](#)

[SSOTP website](#)